

Gil Bruvel



Gil Bruvel

Sculptures,
Mixed Media,
& Paintings



The Artist	6 - 7
Pixelated Forms	8 - 27
Wall Sculptures	28 - 35
Mojis	36 - 41
Cubist	42 - 47
Flow	48 - 63
Functional Art	64 - 73
Commissions	74 - 85
Paintings & Drawings	86 - 99

The Artist



Gil Bruvel is a visionary artist, capable of translating complex ideas and fleeting impressions into stunning works of art. His curiosity about the human condition and the workings of the human mind is honed through daily meditative practice. His art emerges from a deep contemplation of images, emotions, and sensations, which he refines continually before he casts them into material form. "We try and fail until we get it right. Failure is essential in crystallizing and improving on our initial ideas," states Bruvel. "There is a great complexity to us and to all that surrounds us, which is not accessible unless we are willing to move beyond physicality and into the deeper layers of our consciousness. Therein lies an experience that is to be felt, rather than described or rationalized. My challenge as an artist is to give it a non-verbal expression through the use of form, patterns, and color."

Bruvel's early work is marked by a desire to escape, rather than penetrate, reality at a deeper level. He was influenced by the surrealists such as Salvador Dali, Max Ernst, and Giorgio de Chirico. His art was an exercise in imagination through the painting of alternate realities.

While elements of surrealism have been present in his works throughout his career, Bruvel's later efforts play with the distortion of realities, duality, and multiple perspectives. In his Cubist series, he reduces human form to component planes and geometric shapes, using negative space to create positive form, and vice versa. He seeks to reinforce the notion of fluidity by expressing multiple viewpoints simultaneously. Bruvel often bends or extends the lines that define human form, dissolving its rigidity and allowing it to connect with the flow that constantly surrounds it. To convey the complex interplay of forces that immerse us, he disrupts vertical lines by inserting horizontal ones. He creates intentional gaps and negative space to highlight disconnect.

Having trained extensively in his father's cabinet-making business, and later at a prestigious restoration workshop, Bruvel's work displays a mastery of technique and high-level craftsmanship. He moves through a wide range of media and forms with ease. His sculptures in bronze, wood, and stainless steel, as well as his functional furniture and mixed media, all reflect a well-defined move towards three-dimensional representation. The influence of architects such as Zaha Hadid, Frank Gehry, and Lebbeus Woods is present in many of his pieces.

Many themes that define Bruvel's work culminate in his most recent series, *Bending the Lines*. At first glance, we recognize the ever-prevailing human form but are instantly transfixed by the thousands of wooden shafts that comprise the work. The pixelated outlines mimic our complex neural pathways, while his use of gradient color reinforces our minds' interconnectedness. The wood is charred to show the impact of natural phenomena on the physical form and its inherently transient nature, which is transformed by the passage of time, revealing further patterns and detail.

Gil Bruvel was born in Australia, but raised in the South of France. He currently resides in Wimberley, Texas. Represented by a host of galleries worldwide.

Bending the Lines: Pixelated Forms

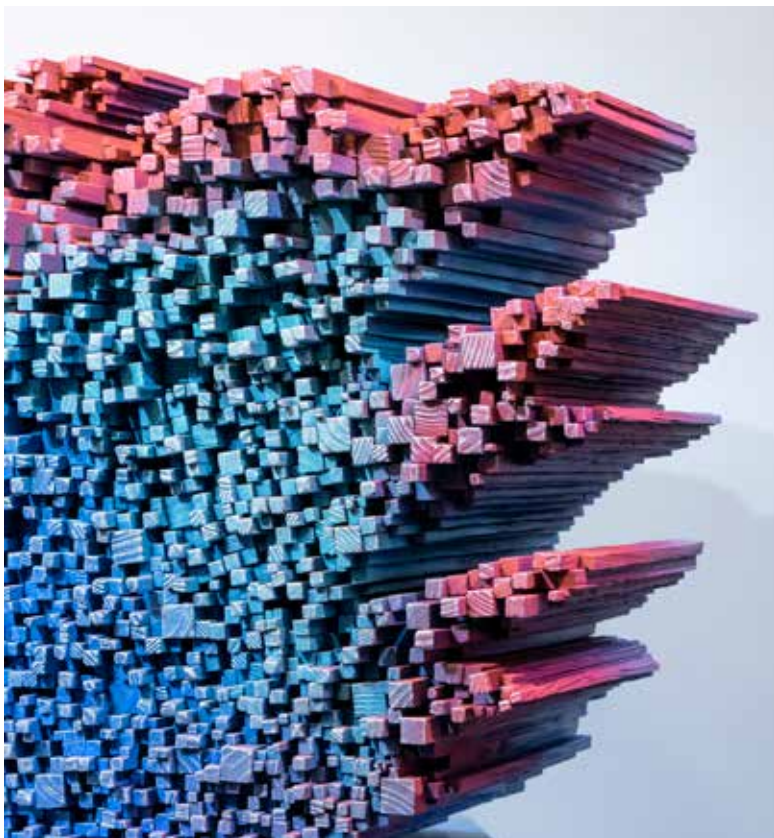
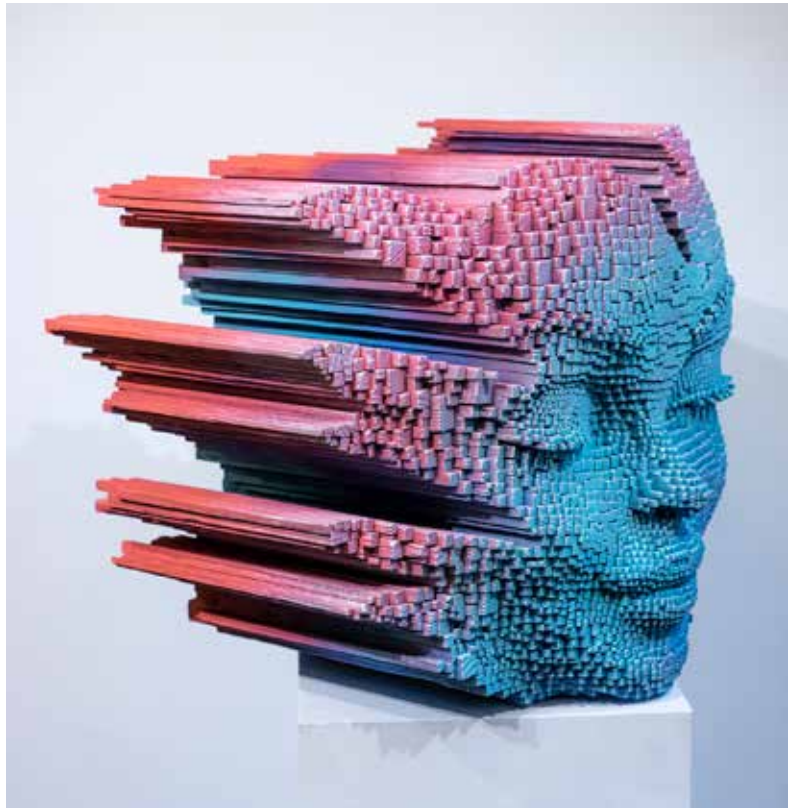
Bending the Lines focuses on Bruvel's explorations of dynamic movements using wood as his medium to create captivating, lighthearted abstract sculptures which reference the delicate and ordinary existence around us.

Bruvel breaks away from the objective constraints of concepts and forms in order to shift our perception and reinvent the world around us. Layering both the physical and conceptual together, Bruvel's sculptures are an exploration of consciousness interacting with mystery.

*Builder, 28 ½" H x 19" W x 20" D,
stacked wood sticks*



Bending the Lines series transforms the edges and the static feature of objects by emphasizing the fluidity and dynamic movement that can be experienced through a careful consideration of color theory and structure. Through the use of a vibrant color palette, Bruvel effectively bends lines into his own imaginative creations that form geometric shapes which feel peculiar yet familiar.



Circular forms, semi-circles, plunging triangular figures, abstract floral and cloud patterning erupt from its structure and expand themselves out into the wooden frame. These structures echo sublime images that are part of our daily existence, yet their abstraction and details encourage the viewer to observe the world around them with greater wonder.



Comet, 27" H x 27" W x 23" D,
stacked wood sticks

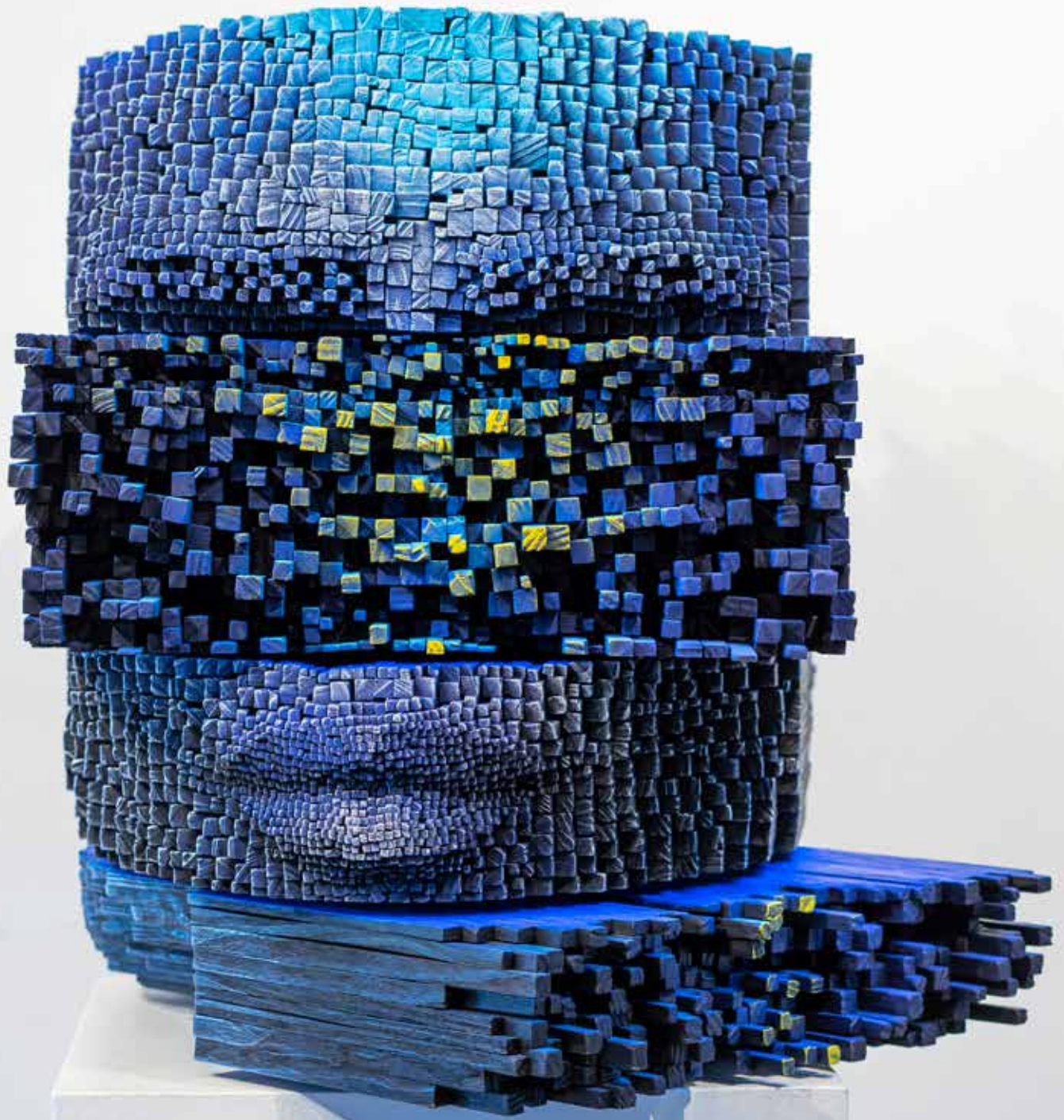




Bruvel's sculptures are instantly and intuitively beautiful. Similarly, the focal point of these works is a face that emanates serenity. In Bruvel's case, the faces aren't made of stone but of thousands of wooden sticks. Each stick is scorched, painted, and stacked with its siblings.

The eyes of Bruvel's faces are closed in meditative repose and their lips hold gentle smiles a touch brighter than Mona Lisa's. Each sculpture occupies its own universe of color. Gradients move the eye gently from one part of the statue to another. Combined with their intricate geometries, the sculptures' colors bring to mind chunks of gem-like mineral forms lifted out of glittering caverns.





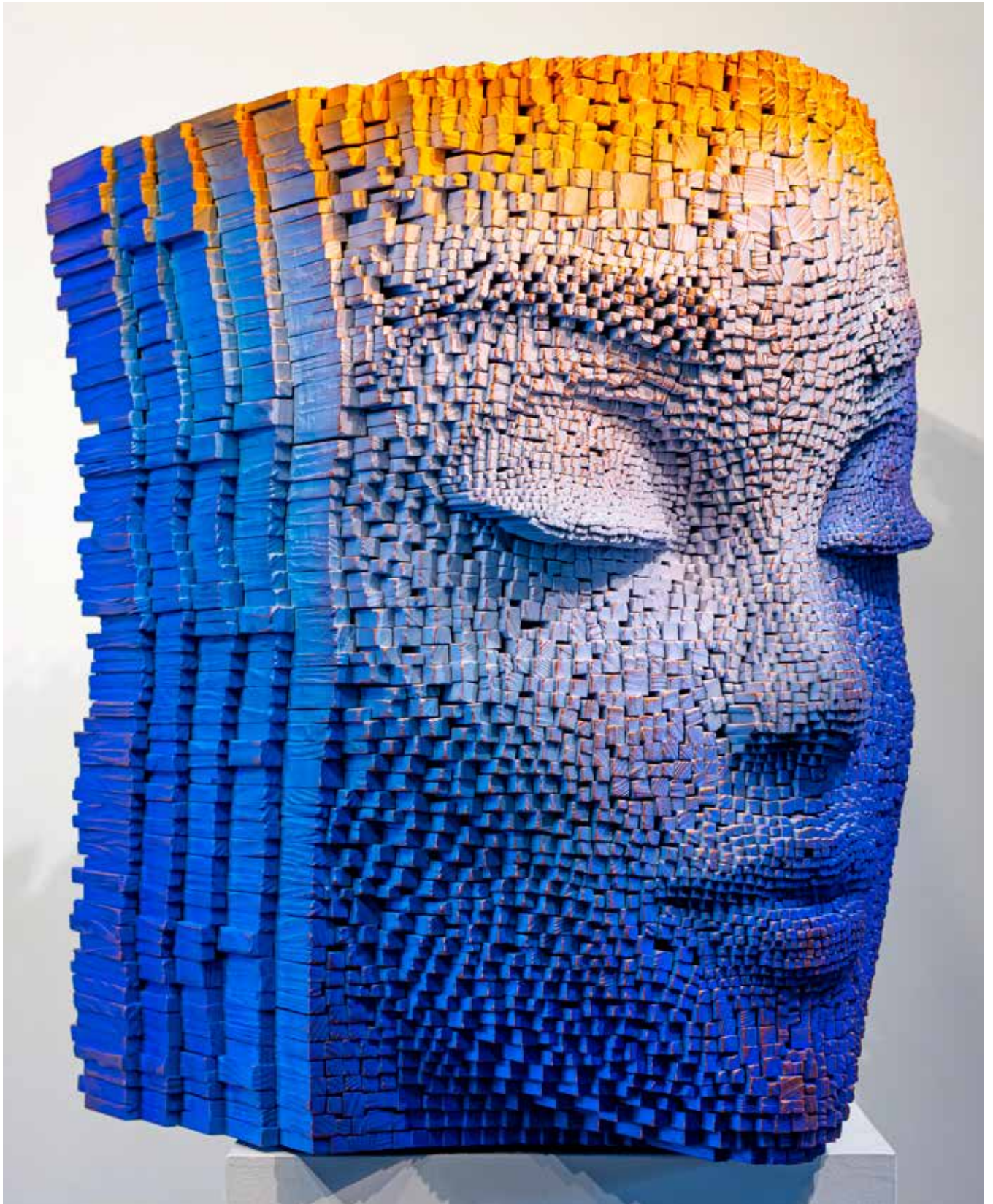




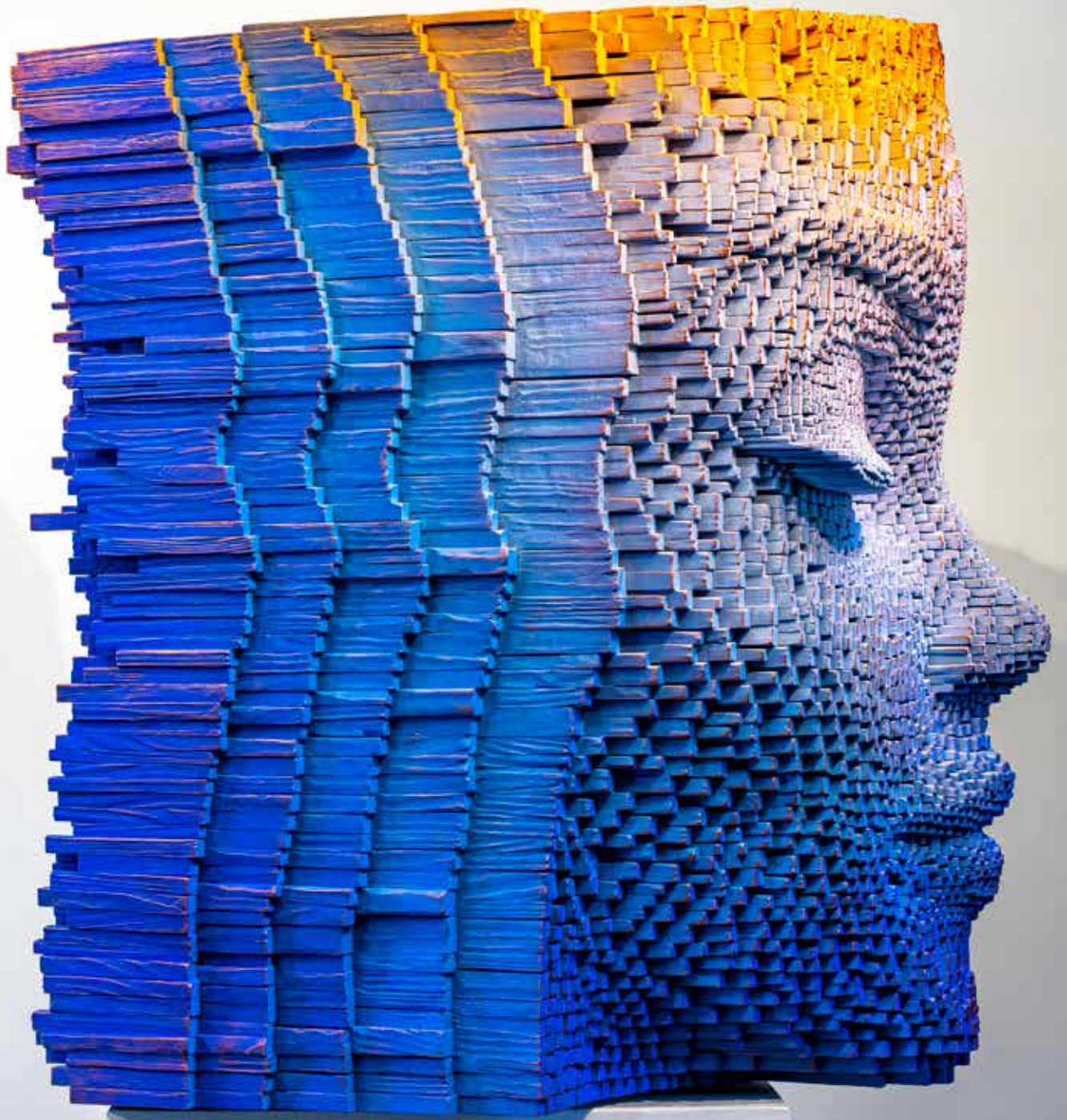
These highly complex and densely compact sculptures incorporate a seemingly infinite number of miniature cubes and rectangles that lay like woven threads cascading down and rising through each piece. The interlocking of these structures forms an inner mechanism within each piece that continues to recreate itself through its own energetic surface.

The colors provide a radiant tonal depth throughout, whilst the edges of the placed objects form a luscious texture that trails our gaze to the motion held within. Every element of each piece precisely demonstrates Bruvel's technical craftsmanship and ability to create a dimensional performance that has a perceived sensation of life.





Rainbow Mind, 30" H x 28" W x 35" D, stacked wood sticks

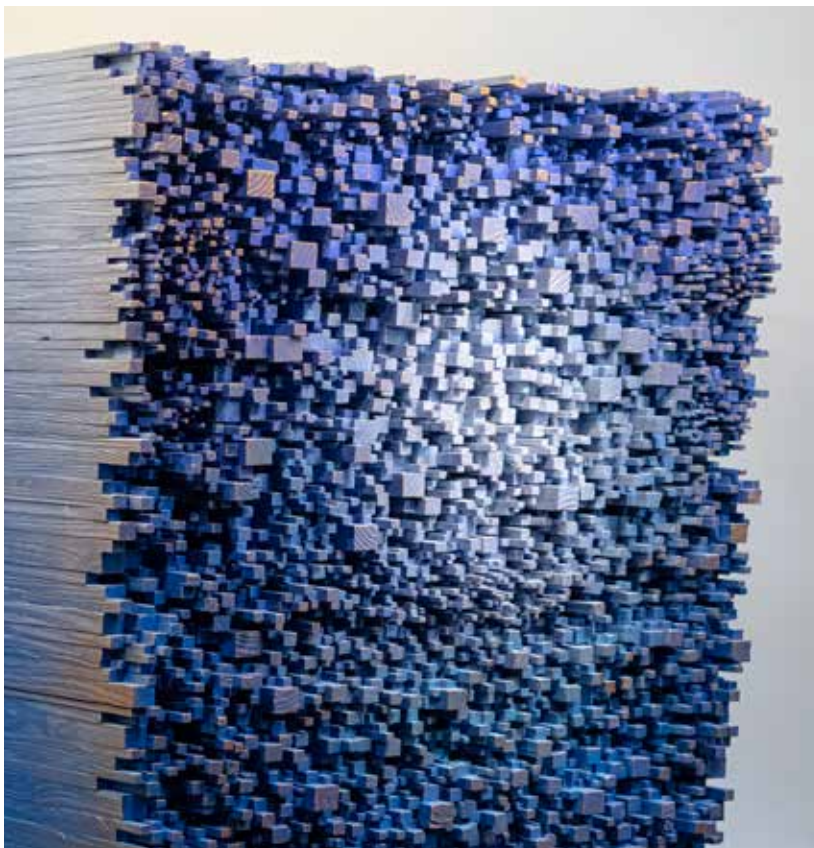






Breathe, 61" H x 41" W x 51" D,
stacked wood sticks

That internal fight, so much a part of what it means to be human, is depicted symbolically in these sculptures. Bruvel points out how the sticks that make up these faces are of different thickness and shape. This is no accident. Up close, we see the faces' fragmented nature. When we step back, that fragmentation reveals a coherent whole: a face arises from apparent chaos.



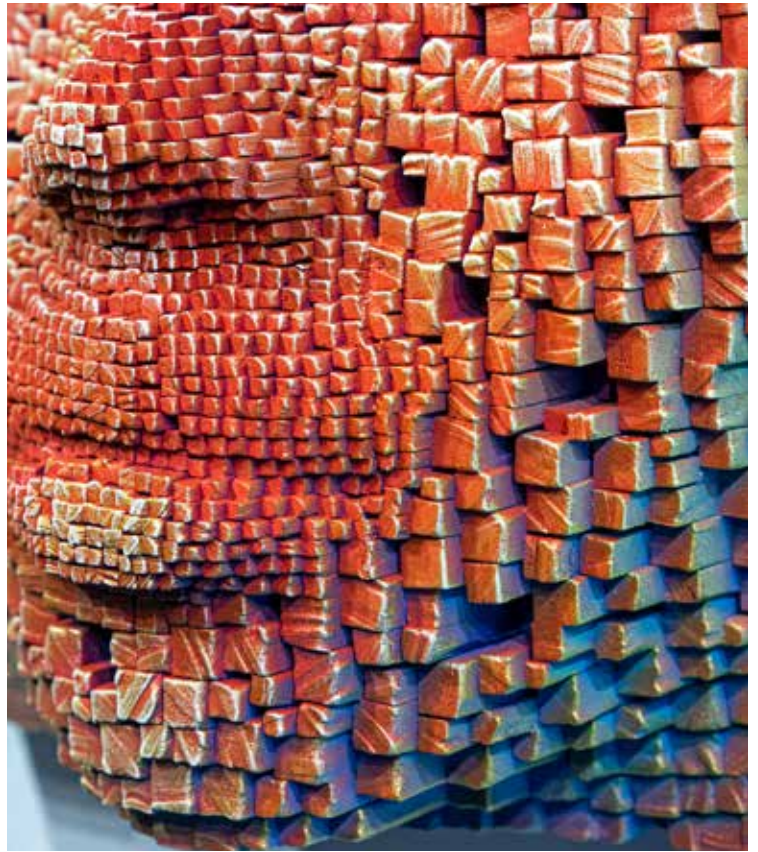
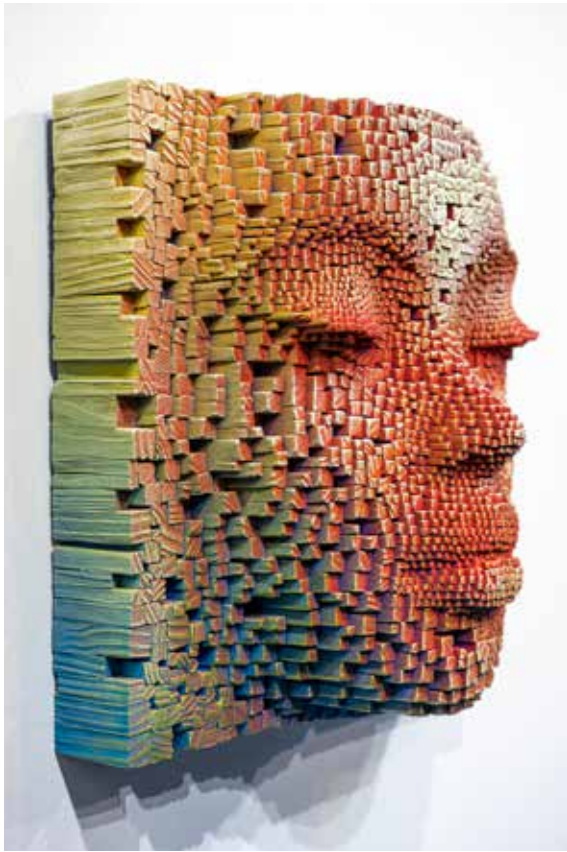
"We are not just one piece. We are composed of multiple pieces and sometimes those pieces which make us up are in contradiction with one another...Sometimes in harmony. But also, this fragmentation is a good representation of who we are."

- Gil Bruvel

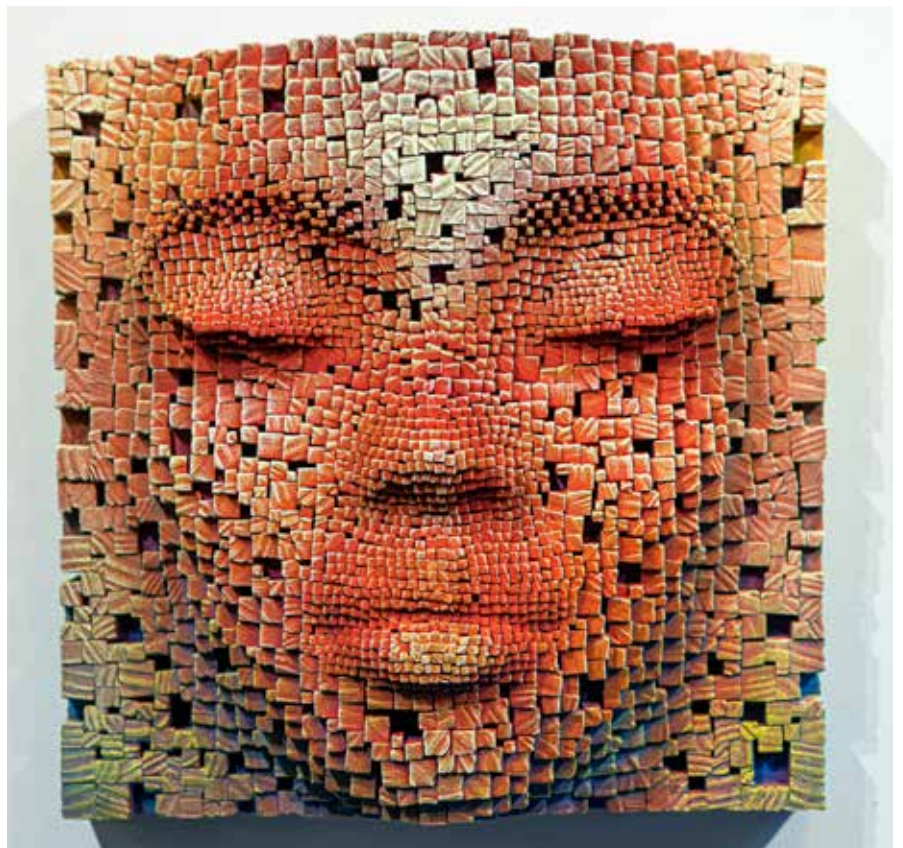


*Mask #52, 30" H x 30" W x 11" D,
stacked wood sticks*

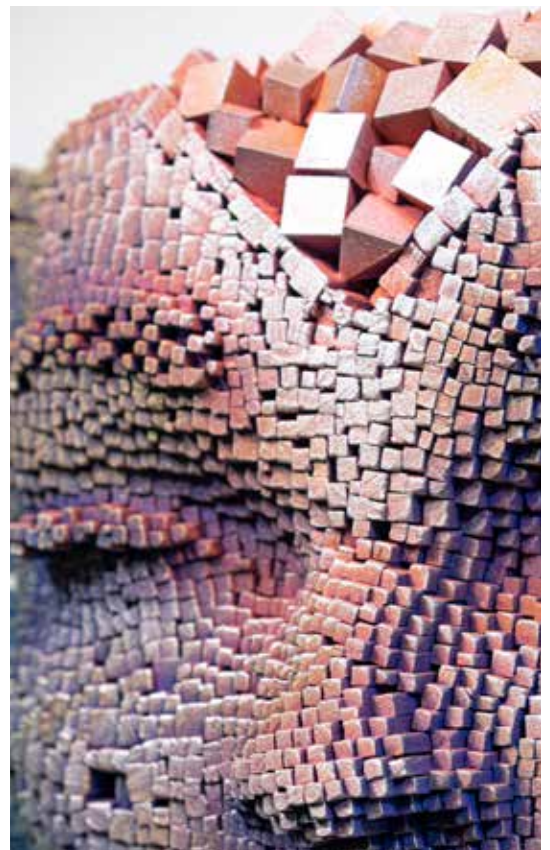
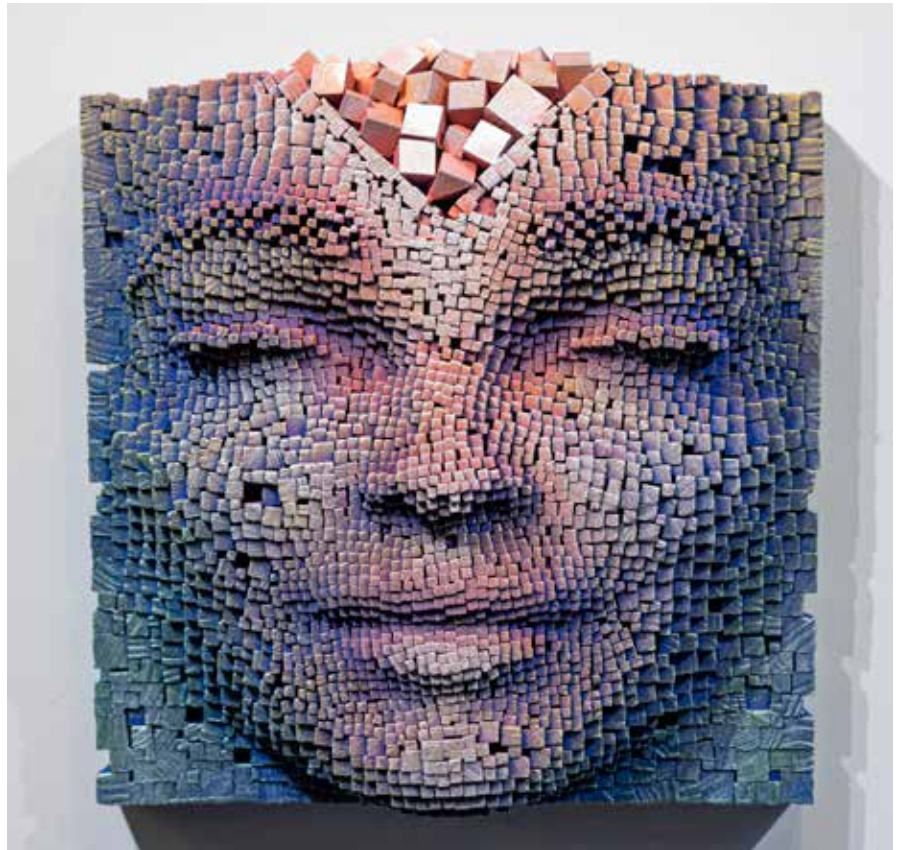




Mask no.11
16" H x 16" W x 9" D,
stacked wood sticks



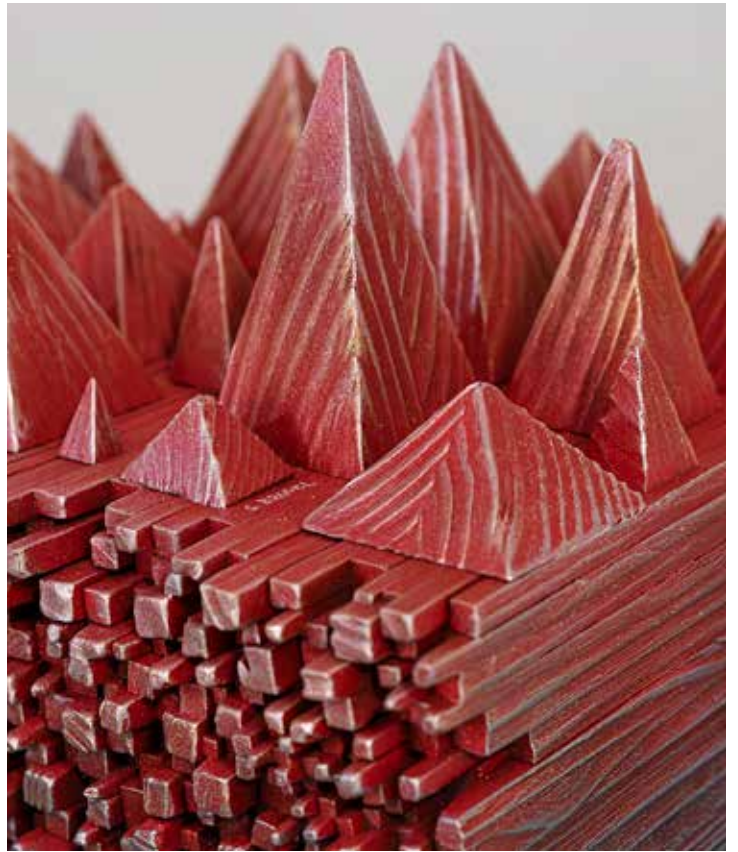
Mask no.28
16" H x 16" W x 8" D,
stacked wood sticks





Mask no.23
17" (diameter) x 9½" D,
stacked wood sticks





Pyramid Mind
21" H x 16" W x 18" D,
stacked wood sticks

Mask series,
detail group shot

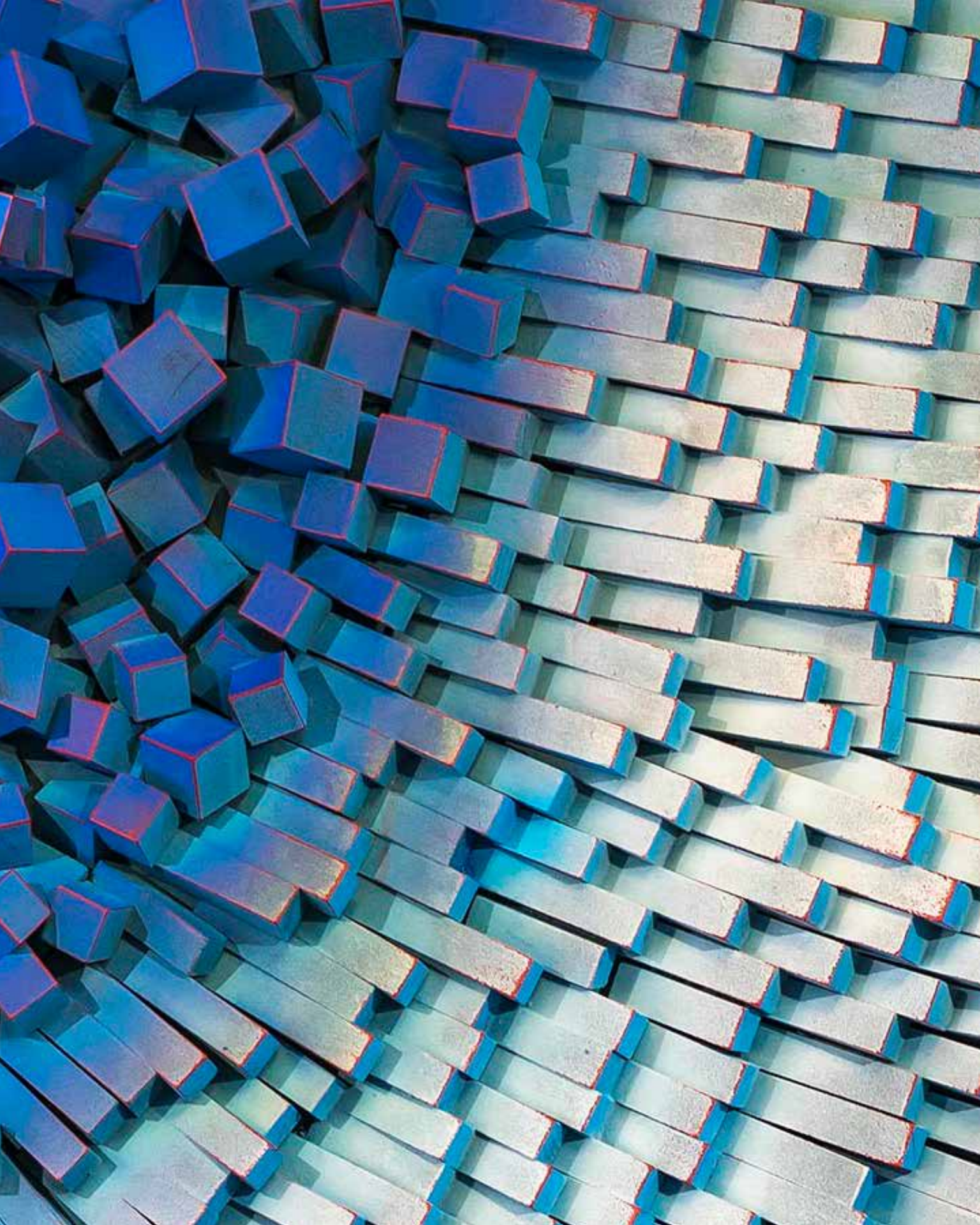


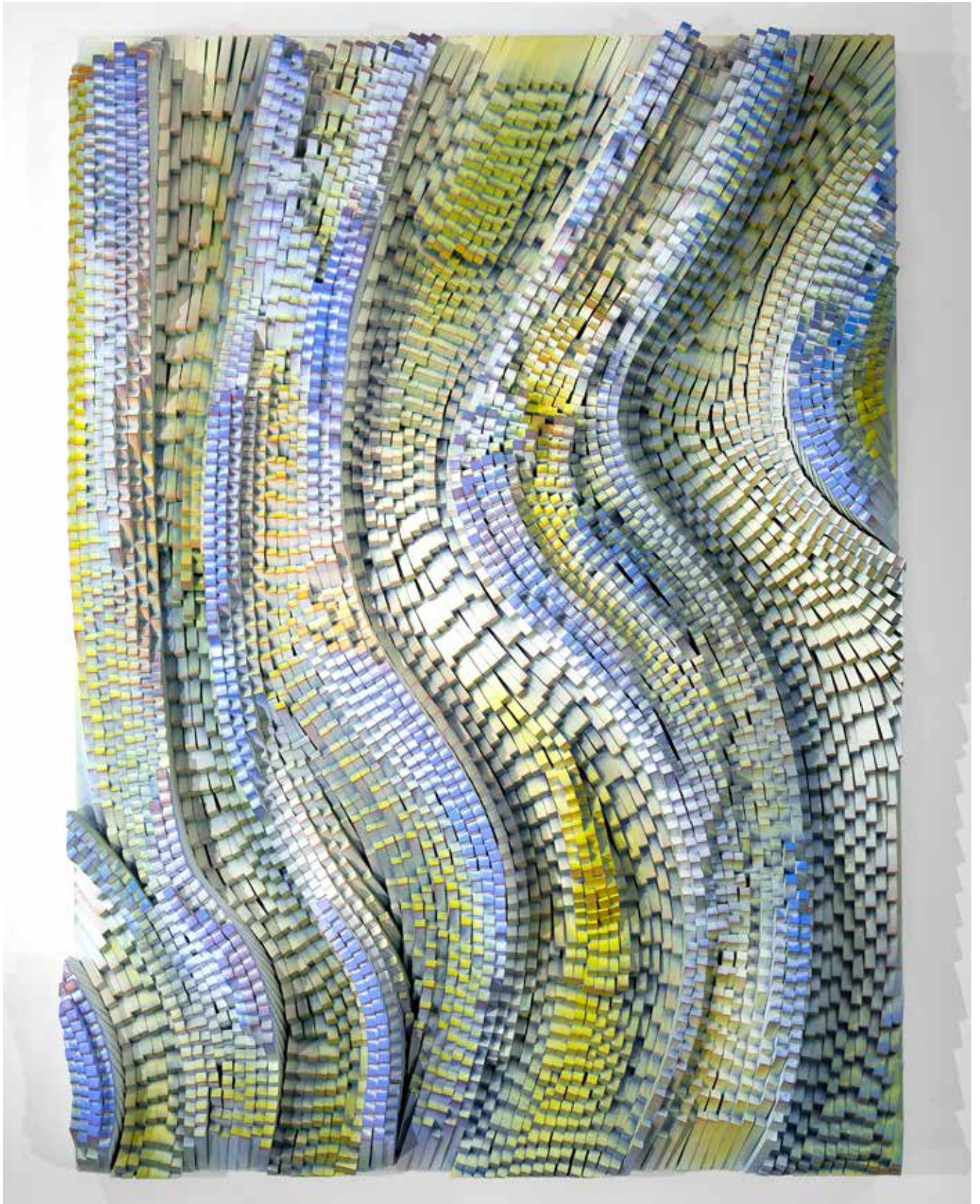


Bending the Lines: Wall Sculptures

These wall sculptures embody the sensations of movement and topographical pathways found in nature at macro- and micro- scale. Using this ideology, Bruvel harmonizes direction and angles in his artwork with rigid wood sticks to create fluid dynamic forms.

While exploring both fixed and flowing arrangements, Bruvel compliments each work with a combination of earthy hues, giving each its own familiarity comparable to experiences found in nature. This meticulous effort gives each work its unique personality that vary widely despite the use of simple material.

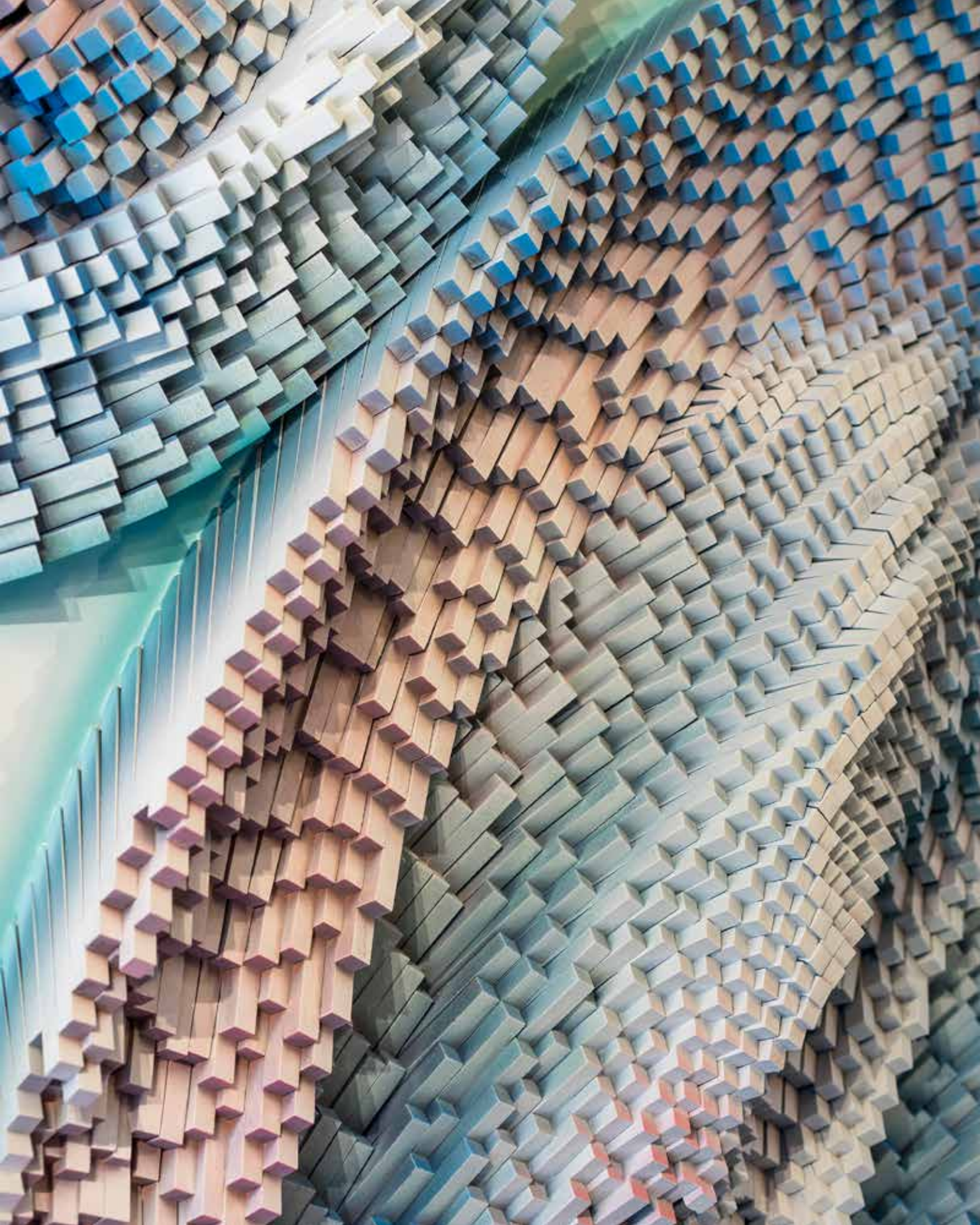


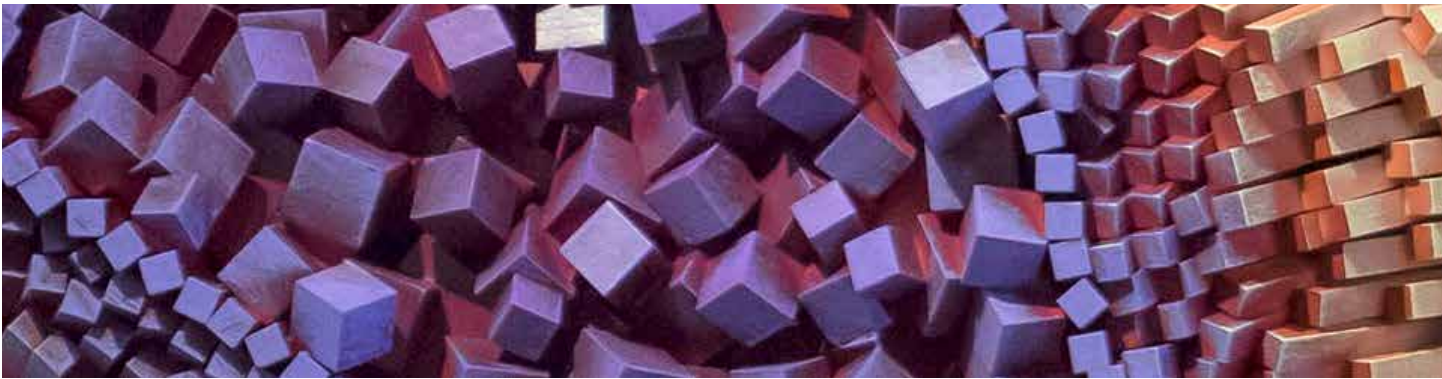
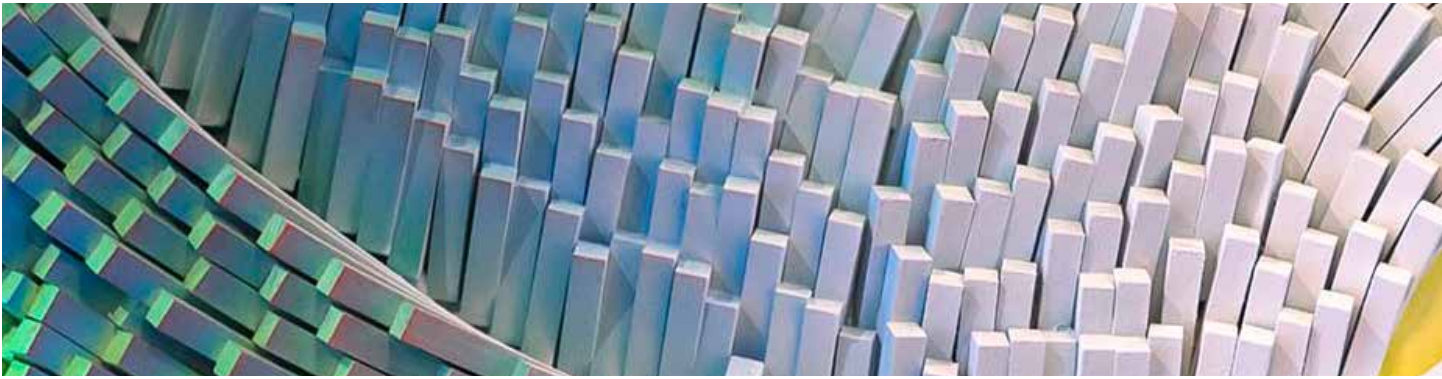


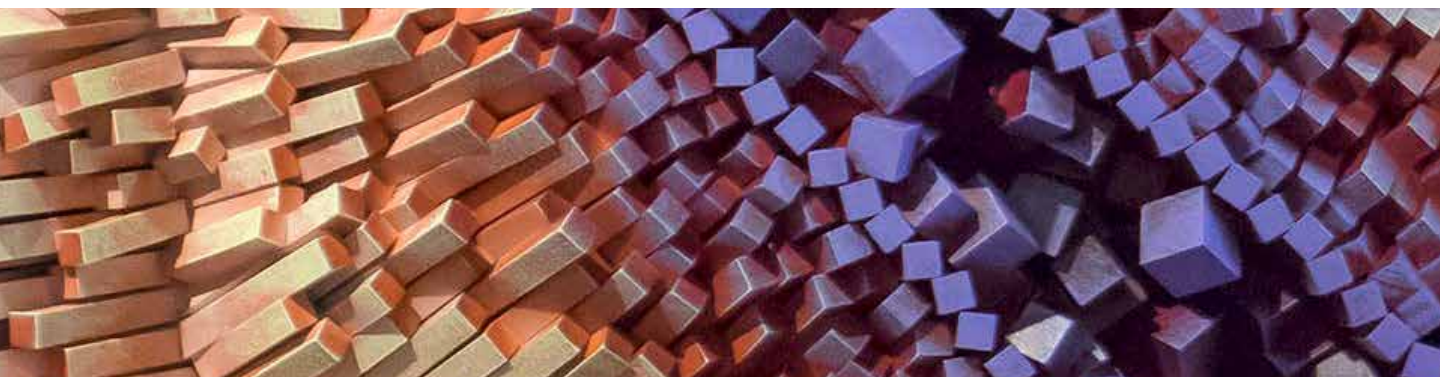
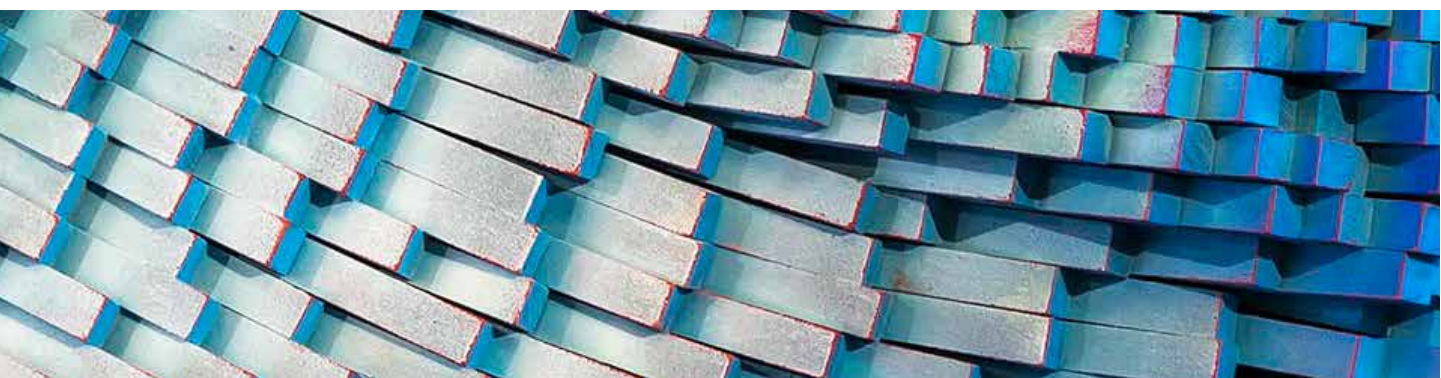


Bending the Lines no.22, 48" H x 38" W x 9" D, wood sticks on panel









Bending the Lines: "Moji" Series

As a visual method of communication, emojis are universally understood and break the international boundaries of traditional language. By re-imagining this well-known symbol with burnt wooden sticks, Bruvel calls attention to how emojis simplify interpersonal communication and potentially disconnect users from experiencing the corresponding emotions.

Bruvel invites the viewers interpretation to the artwork, encouraging the audience to ponder the potential ambivalence of the pictorial character and whether emojis simplify or add to traditional communication methods.

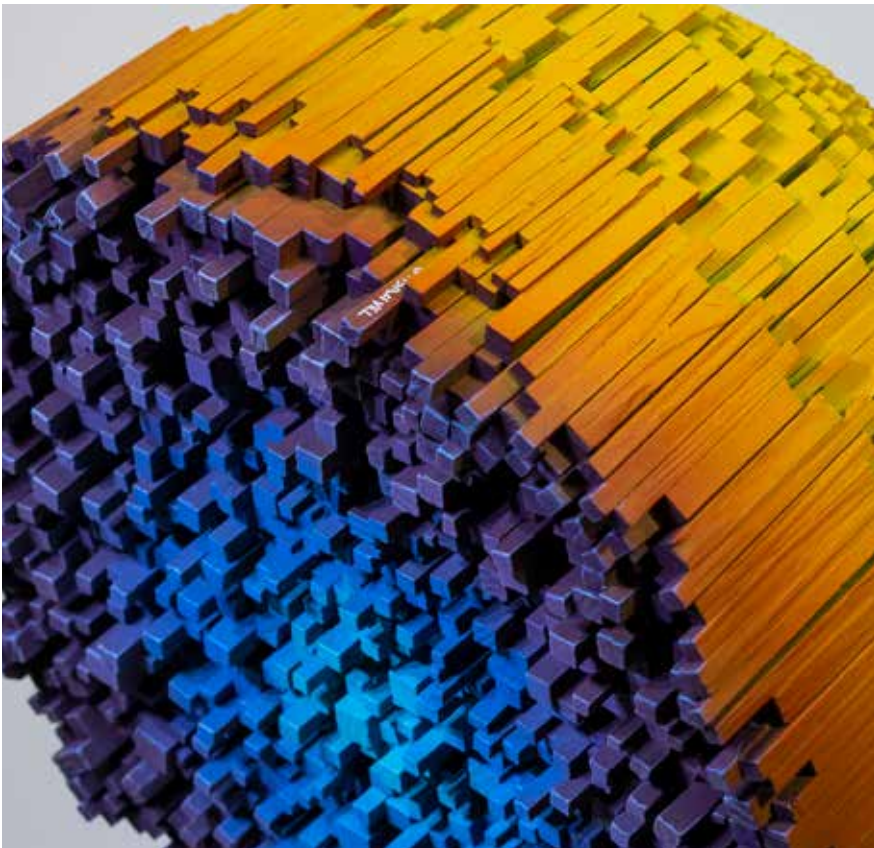
In the faces of his Bending the Lines series, Bruvel's use of wood reflects the complexity and dynamisms of the human psyche. The back of these artworks are abstract visuals of synapses firing within the brain. Bruvel's juxtaposition of the wood sticks mimics the numerous pathways that compose the human neurological system and give representation to the complexities of thoughts, feelings, and emotions.

Happiness, 20 ½" (diameter) x 15" D,
stacked wood sticks









Moji Mojo
21" (diameter) x 17" D,
stacked wood sticks



Cubist Series

Bruvel explores the connection between various patterns and human facial expressions. Made with separate pieces that converge into a whole, these complex structures take on a life of their own. Defined lines gradually roll into sharp curves, blending soft features with an abstract contour. As the face is composed, fractured architectural landscapes begin to emerge as forms combine. The parts are represented in a variety of organic and geometric forms unique to each artwork.







Cubist no.2, 56" H x 40" W x 14" D, wood & resin on panel





Cubist no.11, detail

Flow Series

With the *Flow series*, Bruvel continues to celebrate the imaginative and the real. In this series, his authentic vision began to penetrate the veil of material form from their two dimensional depictions.

These striking, evocative sculptures, comprised of graceful sinuous ribbons of cast stainless steel, reveal an essential underlying fluidity that exists simultaneously within the physical, quantum, and metaphoric realms.

Apex, 15" H x 4" W x 9" D,
stainless steel cast







Dichotomy, 28" H x 14" W x 27" D, stainless steel cast









Rain, 60" H x 50" W x 66" D, stainless steel cast







Never Ending
30" H x 37" W x 24" D
stainless steel cast





Flowing, 20" H x 29" W x 17" D,
stainless steel cast





The Descent, 60" H x 50" W x 73" D, stainless steel cast







Functional Art







Checkmate

piece size: 4" - 7"

board size: 37 1/2" x 37 1/2" x 3 1/4"







Checkmate

piece size: 4" - 7"

board size: 37 1/2" x 37 1/2" x 3 1/4"







Dichotomy Chair, 35" H x 21" W x 25" D, stainless steel cast

The *Flow Series* sculptures have evolved from organic form and natural inspiration, with the collection of stainless-steel castings ranging from ethereal representations of human or animal forms to abstract patterns and material objects. Stemming from the skills he acquired in his father's wood-working shop, this chapter of Bruvel's collection showcases how the artist's talents and collection have been applied to design with a limited-edition series of art objects created in the same visionary vein.

This trio of functional art is suitable for both fine art and design exhibition. Consisting of two chairs and a triangular stool, the breathtakingly designs exist as aesthetically stunning compositions that reflect aspects of the Flow series. With fluid dynamics, the energy in these designs by Gil Bruvel captures the movement and structure found in natural formations. In stainless steel, these utile artworks converge into an alchemical set of fine art design that brings this Artist's poetic abstractions into the realm of practical artistry.



Equilateral Apex Stool
18" H x 17" W x 17" D,
stainless steel cast



Zig Zag Impulse & Dichotomy Chairs, sets

Commissions

Gil Bruvel is an artist of multiple talents that he has mastered throughout his lifelong artistic career. Not only is he an exceedingly exceptional sculptor and painter, but Bruvel is also familiar with creating artwork specifically commissioned for large opulent estates. Such commissions have included functional sculptures of his own design, monumental sculptures to compliment the clients property, and enthralling works of pictorial grandeur.

Utilizing the highest level of engineering and visibility assessment, his sculptures both functional and visual are professionally cast in either high quality bronze or 316L surgical /marine grade stainless steel. These works of art designed by the artist for his clientele have been received with great satisfaction, and will be enjoyed for the many years to come.

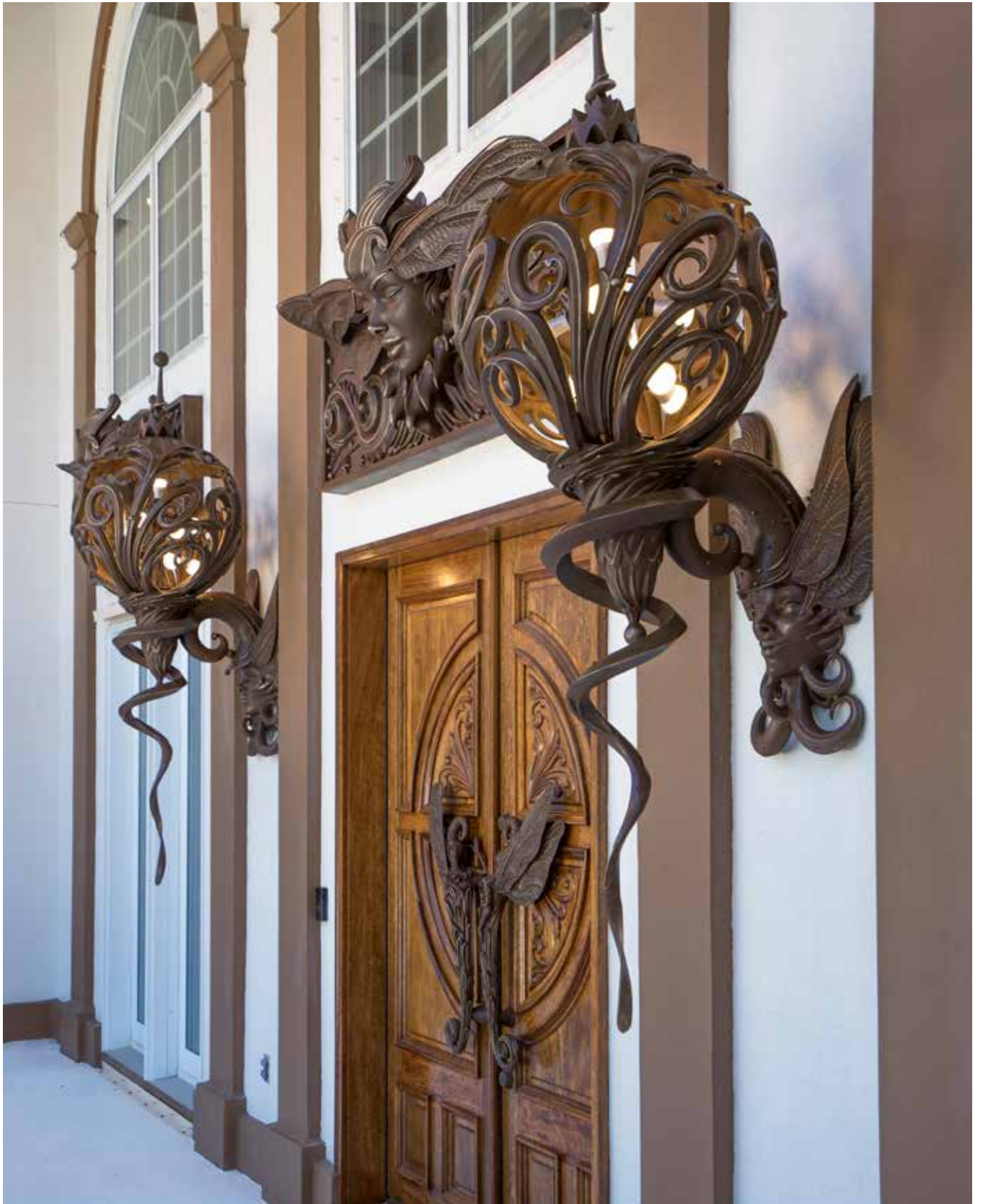






bronze castings



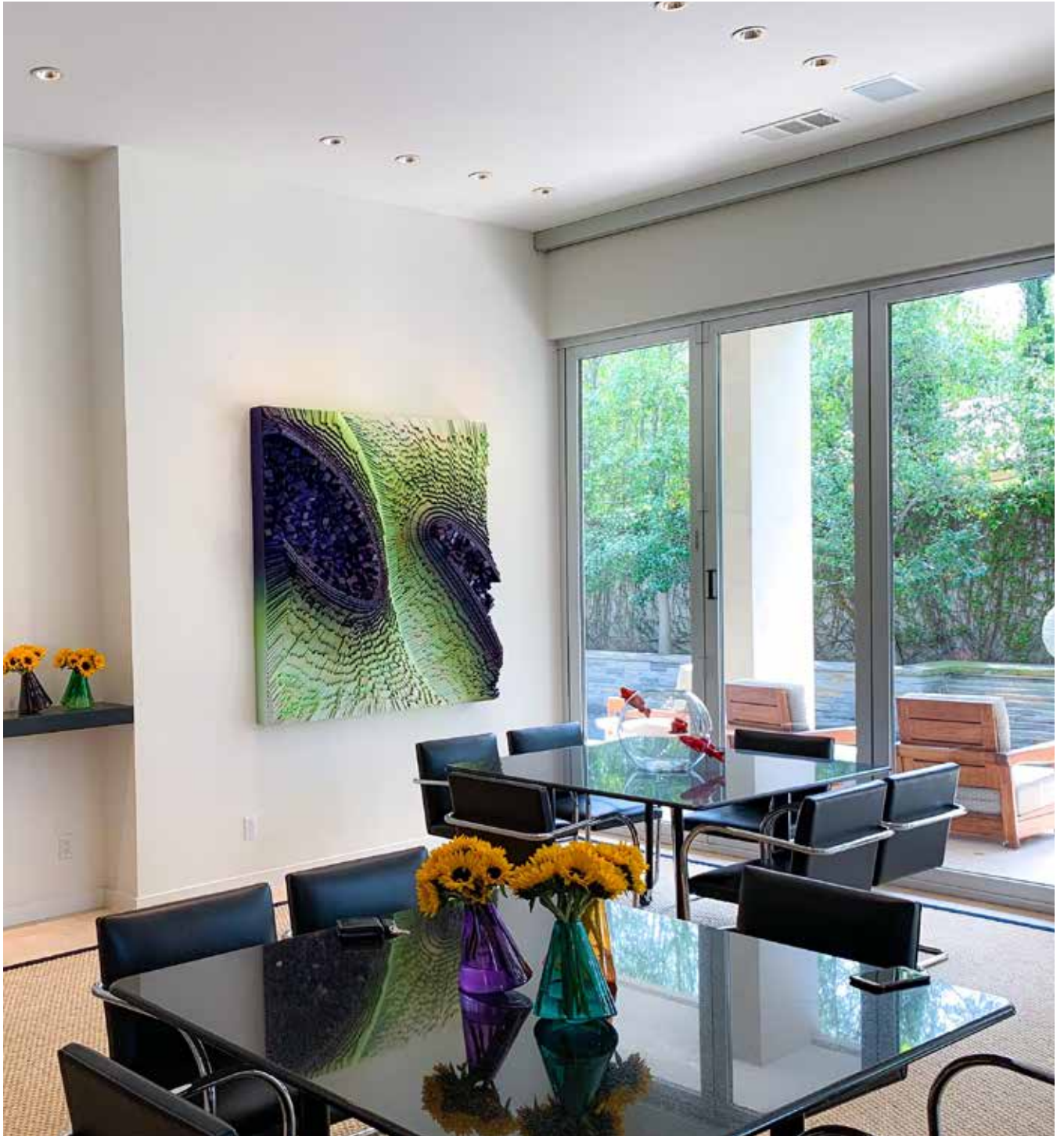








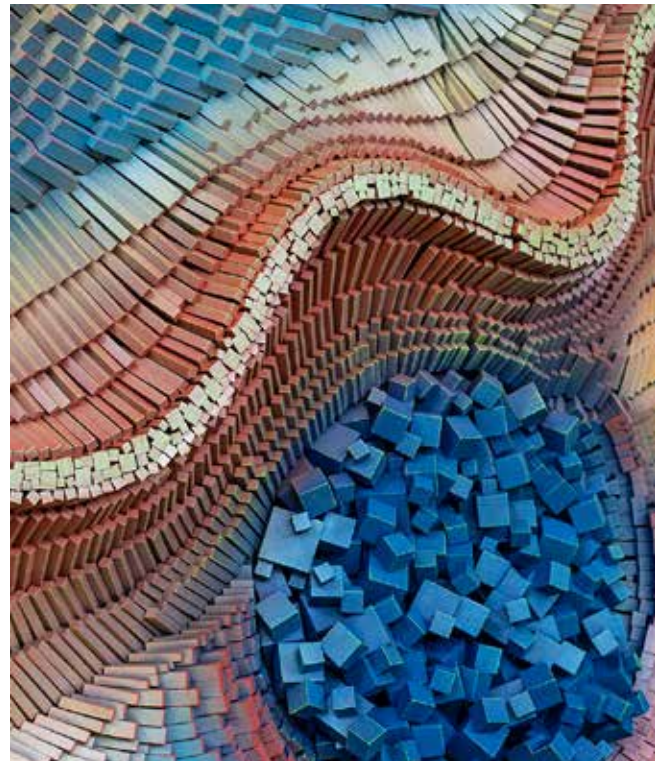
wood sticks on panel

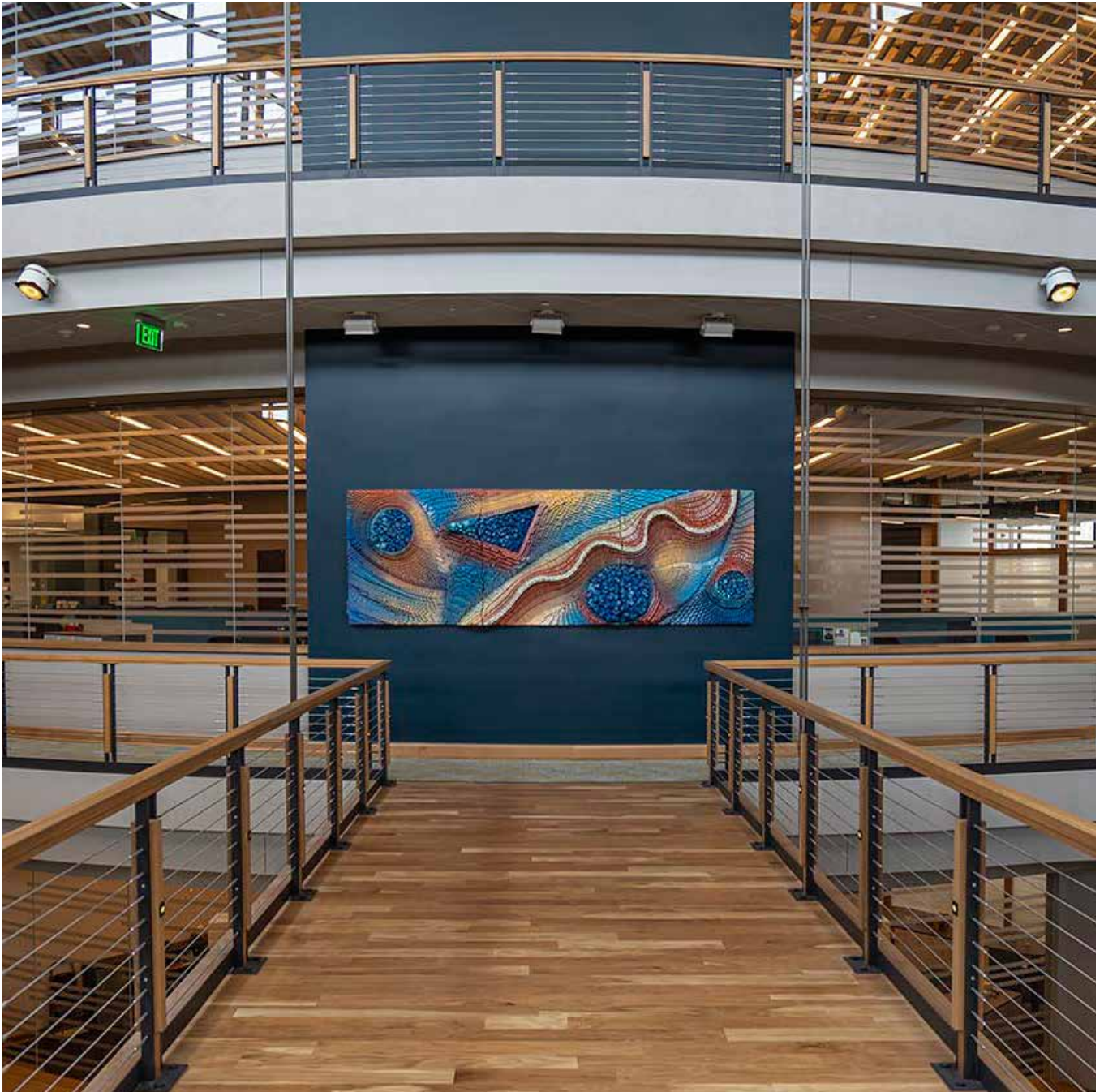






bronze casting





wood sticks on panel.
Private Company in Wisconsin

Paintings & Drawings

In this selection of Gil Bruvel's two dimensional artworks, perceptual boundaries dissolve. Inspired by the encompassing effects of sensory awareness, these artworks grant the viewer a visual of sounds, smells, colors, and shapes that are intertwined within the surface; distinctions between all disappearing.

The dancing shapes and hues radiate the artist's visual expression of natural humanity re-imagined. These creations possess timeless wonders, capturing the eye of all who happen upon them and further luring the viewer into the beautifully crafted visions of Gil Bruvel.







The City, 31" x 15", graphite on paper



Time Dance, 54" x 54", oil on canvas



Time Dance, detail shots



My Mirrors Remains, 8 3/8" x 8 3/8", oil on board



Awake, 15" x 15", graphite and gouache on board



Planet Scape — The Seed, 17" x 17", oil on board



The Horizon, 40" x 40", oil on canvas





The Journey no.4, 30" x 15", tempera on paper



Scent no.1,
48" x 48", oil on canvas



Scent no.2,
48" x 48", oil on canvas





GIL BRUVEL

www.bruvel.com

telephone USA: 512-484-6520

email: gilbruvel@yahoo.com

www.facebook.com/gil.bruvel

instagram: @gilbruvel

Credits:

All artwork and photos Copyright Gil Bruvel,
2013, 2014, 2015, 2016, 2017, 2018,2019.

Writings from Daniel Shkolnik & Zoe Foster

Book design by Nathan Sing

